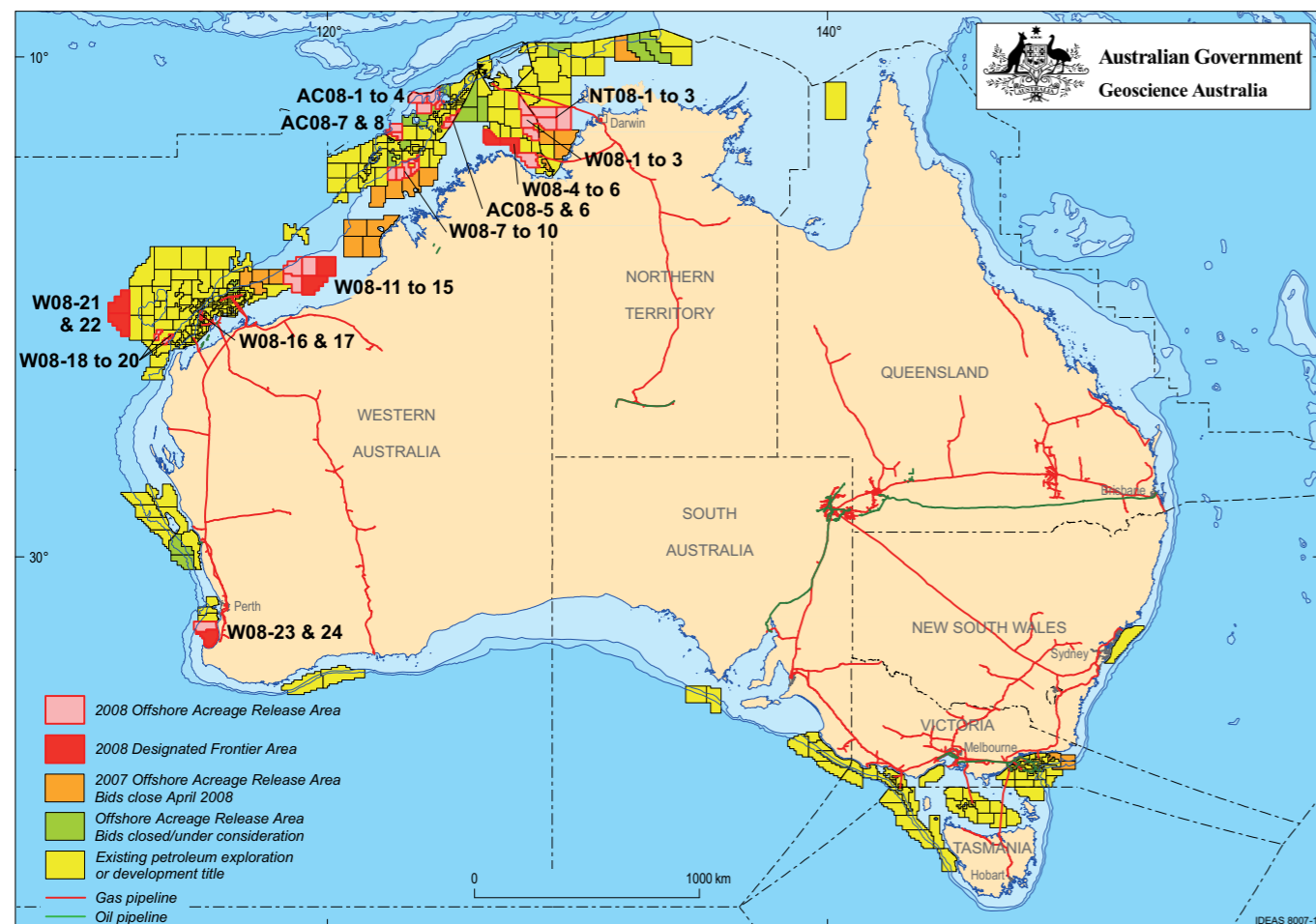


2008 Release of Offshore Petroleum Exploration Areas

The 2008 Offshore Petroleum Exploration Acreage release comprises 35 Release areas, located across five basins. The Release areas range from frontier to mature status and offer opportunities for exploration companies of all sizes.

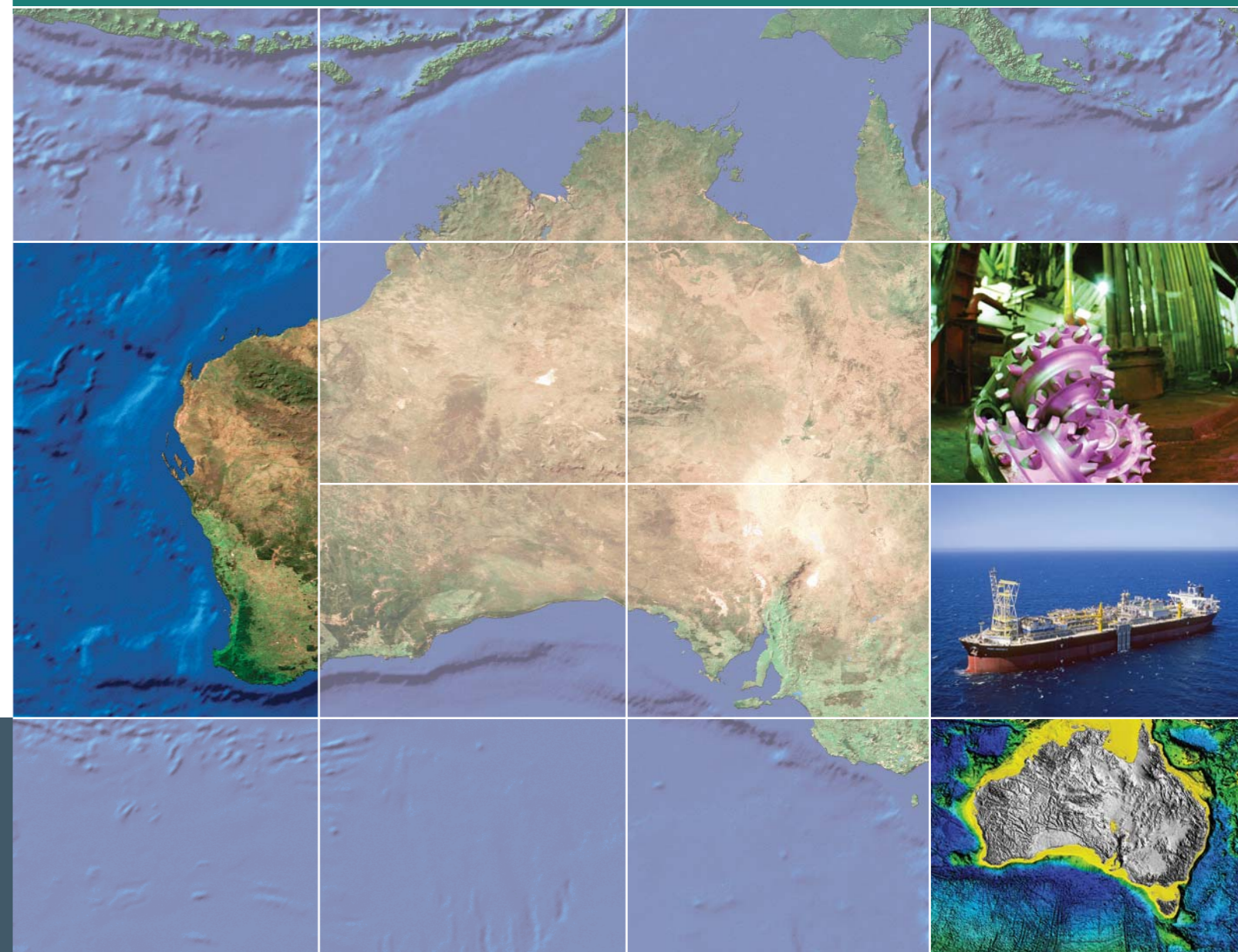
Comprehensive acreage release information packs can be obtained (free of charge) by emailing contact details to: petroleum.exploration@ret.gov.au



EXPLORE AUSTRALIA

BARROW SUB-BASIN, CARNARVON BASIN WESTERN AUSTRALIA

Release areas W08-16 and W08-17



FOR MORE INFORMATION CONTACT:

Mr Bob Pegler
General Manager
Offshore Resources Branch
Resources Division
Department of Resources, Energy and Tourism
GPO Box 1564, CANBERRA ACT 2601
AUSTRALIA
Telephone: +61 2 6213 7928
Facsimile: +61 2 6213 7955
E-mail: petroleum.exploration@ret.gov.au
Internet: www.ret.gov.au/petexp

FOR GEOSCIENTIFIC ENQUIRIES CONTACT:

Dr Clinton Foster
Chief of Division
Petroleum & Marine Division
Geoscience Australia
GPO Box 378, CANBERRA ACT 2601
AUSTRALIA
Telephone: +61 2 6249 9447
Facsimile: +61 2 6249 9933
E-mail: Clinton.Foster@ga.gov.au
Internet: www.ga.gov.au

BIDS CLOSE 9 OCTOBER 2008



Australian Government
Geoscience Australia

Current Exploration Opportunities in the Barrow Sub-basin, Carnarvon Basin, Western Australia Offshore Australia. Open for bids until 9 October 2008

Release areas W08-16 and W08-17

- Surrounded by major gas and oil accumulations
- Active exploration area with established infrastructure
- Proven Triassic to Cenozoic plays in adjacent acreage
- Special Notices apply, refer to the Guidance Notes.

Geoscience Australia Reports/Products New Reports/Products

- Seismic transects of Australia's frontier continental margins. (2006) GA Record 2006/004.

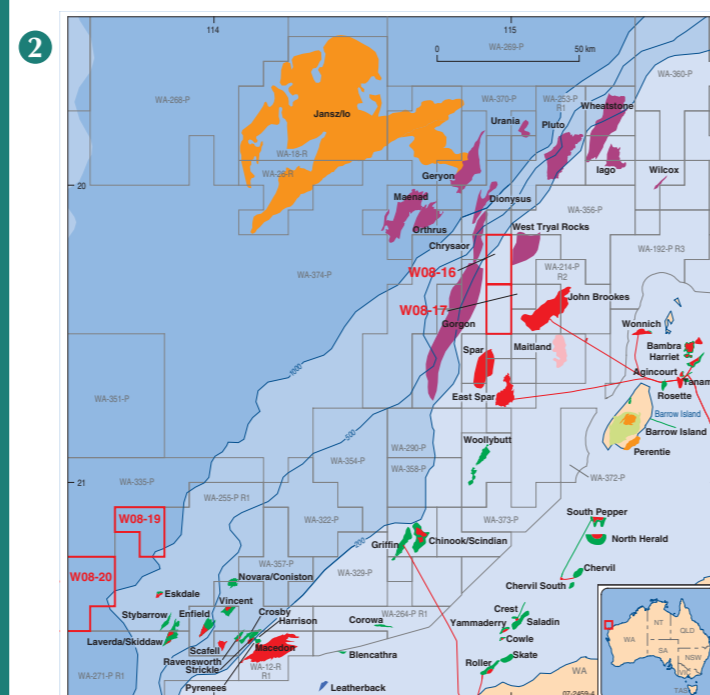
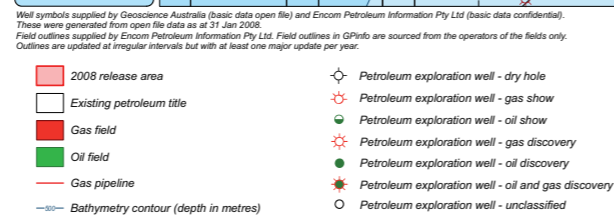
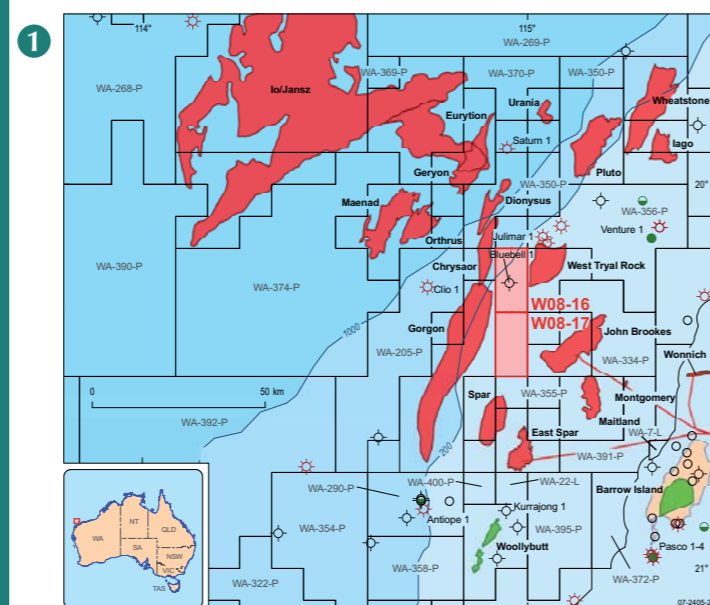
Other Reports/Products

- Triassic biostratigraphic study of greater Exmouth Plateau, synthesis report. (2006) Geoscience Australia Repository destructive analysis report 1297 unpublished
- Oils of Western Australia II: Regional petroleum geochemistry and correlation of crude oils and condensates from Western Australia and Papua New Guinea. (2005) Geoscience Australia and GeoMark Research
- Geological framework of the outer Exmouth Plateau and adjacent ocean basins. (2004) GA Record 2004/13
- Geological framework of the Wallaby Plateau and adjacent areas. (2002) GA Record 2002/21.

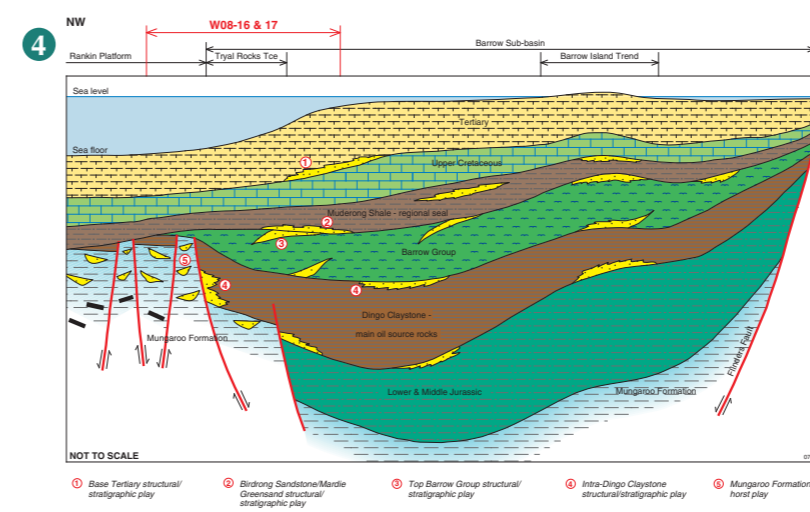
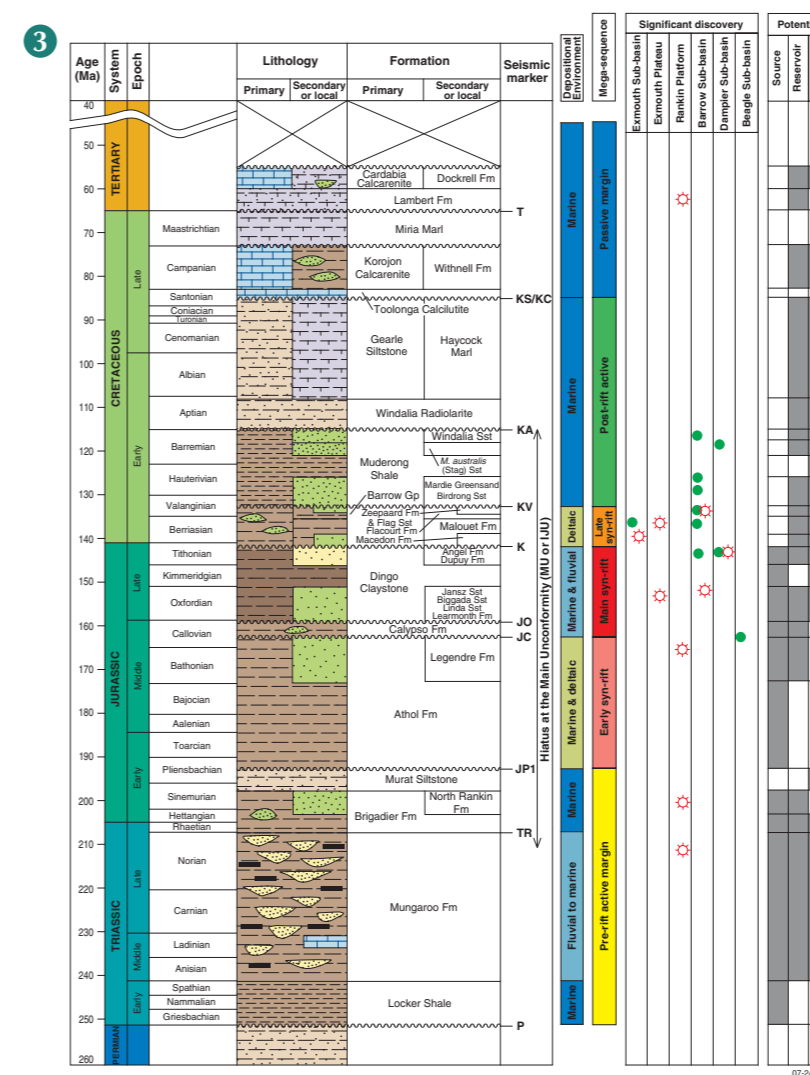
Contact Geoscience Australia's Sales Centre for more information or to order these reports or products, phone 61 (0)2 6249 9966, e-mail sales@ga.gov.au

Relevant Industry Data

- Australian North West Shelf Digital Atlas, www.nwsda.com



| Period (Formation) | Oil accumulation | Gas accumulation |
|--|------------------|------------------|
| Paleocene | | |
| Barremian (Windalla Sandstone) | | |
| Valanginian & Berriasian (Barrow Group) & Birdrong Sat | | |
| Tithonian, Oxfordian and Middle Jurassic | | |
| Upper Triassic (Brigadier and Mungaroo Formations) | | |



NORTHERN EXMOUTH PLATEAU PETROLEUM PLAY ELEMENTS

| Element | Description |
|----------------------------|--|
| Source | Thick Triassic sections on the Exmouth Plateau, in particular the deltaic sediments of the Mungaroo Formation which are considered the source of the major gas fields. Migration from the proven Jurassic oil kitchen of the Barrow Sub-basin. |
| Reservoir | Proven sandstone reservoirs in the Late Triassic (Mungaroo Formation), Early Cretaceous (Barrow Group and Birdrong Sandstone) and Paleocene (Maitland Sandstone) and potential reservoirs within the Late Jurassic on the Tryal Rocks Terrace. |
| Seal | Regional seal of the Cretaceous Muderong Shale. Intra-formational seals within the Late Triassic and Early Cretaceous deltaic sequences. Argillaceous facies of the Paleocene Dockrell Formation provide the seal for the Maitland gas field. |
| Traps | Triassic fault blocks and associated drape, structural/stratigraphic traps in the Late Jurassic, Early Cretaceous and Cenozoic sections. |
| Infrastructure and Markets | Current oil and gas production from the surrounding fields. Gas is piped from the nearby John Brookes and East Spar fields to supply the domestic market and there are plans for export LNG from Gorgon and associated fields. |

1. Location map of areas W08-16 and W08-17, showing existing petroleum permits, known fields and discoveries, and gas pipelines.
2. Major oil and gas accumulations in the western Barrow Sub-basin, offshore Exmouth Sub-basin and southern Exmouth Plateau.
3. Regional stratigraphy of the northern Carnarvon Basin.
4. Schematic cross-section across the Rankin Platform and Barrow Sub-basin, with emphasis on petroleum plays.