



Increasing role for gas in the Australian and global energy mix

Geoscience Australia has recently released the *Australian Gas Resource Assessment 2012* which was prepared in conjunction with the Bureau of Resources and Energy Economics. This report documents the growth of gas resources and infrastructure developments which underpin the increasing role for gas in the Australian and global energy mix.

Some examples of key elements of the report include the doubling of coal seam gas (CSG) reserves since 2010, information about CSG/liquid natural gas (LNG) projects under construction and the identification of tight and shale gas resources. It also provides information on major offshore conventional gas projects which have recently commenced construction, including Prelude in the Browse Basin, the world's first floating LNG project. The release of the report also coincides with the commencement of operations at Australia's third export LNG project, Pluto, in the Northern Carnarvon Basin.

The report builds on the Australian Energy Resource Assessment (AERA) which was published in March 2010 as a supporting document to the Energy White Paper process. The AERA

(Geoscience Australia and Bureau of Agricultural and Resource Economics 2010) is the national prospectus for energy resources.

Since the release of AERA there have been significant changes in gas resources and within the gas market. The report provides an assessment of Australia's gas resources in 2012 and has been released to contribute to the final phase of the White Paper process.

For more information

email ausgeomail@ga.gov.au

Related websites/articles

Australian Gas Resource Assessment 2012

https://www.ga.gov.au/products/servlet/controller?event=GEOCAT_DETAILS&catno=74032

Australian Bureau of Resources and Energy Economics

<http://bree.gov.au/>

Australian Energy Resource Assessment (AERA)

www.ga.gov.au/products

New geophysical datasets released

Data from four onshore and offshore airborne magnetic/radiometric, and elevation surveys and three gravity surveys covering onshore Western Australia have been released since March 2012. These datasets can be interpreted to reveal the sub-surface geology of the survey areas and will be a valuable tool in assessing their mineral potential and improving the understanding of basin provinces.



Table 1. Details of the airborne magnetic, radiometric and elevation surveys.

Survey	Date	1:250 000 map sheets	Line spacing/ terrain clearance/ Orientation	Line km	Contractor
Carnarvon Basin North WA	July 2011– February 2012	Onslow (pt), Ningaloo (pt), Yanrey (pt), Minilya (pt), Winning Pool (pt), Quobba (pt), Kennedy Range (pt)	400 m/ 60 m/ east–west	106 320	GPX Surveys Pty Ltd.
South Officer 1 WA	June 2010– February 2011	Westwood (pt) Neale (pt), Vernon (pt), Plumridge (pt), Jubilee (pt)	200 m/ 50 m/ north–south	180 000	Thomson Aviation Pty Ltd.
South West 1 (Moora) WA	June 2011– February 2012	Moora (pt), Bencubbin (pt), Perth (pt), Kellerberrin (pt)	200 m/ 50 m/ east–west	138 874	Aeroquest Airborne Pty Ltd.
Barrow-Dampier Offshore WA	August 1993– January 1994	SE50-10 (pt), SE50-11 (pt), SE50-12 (pt), SE50-13 (pt), SE50-14 (pt), SE50-15 (pt), Bedout Island (pt), Barrow Island (pt), Dampier (pt), Onslow (pt), Yarraloola (pt), Ningaloo (pt), Yanrey (pt), SF49-12 (pt)	1000 m/ 80m asl/ 150°–330°	132 640	World Geoscience Corporation Ltd.

Table 2. Details of the gravity surveys.

Survey	Date	1:250 000 map sheets	Station spacing/ orientation	Stations	Contractor
Peak Hill–Collier WA	August 2011– February 2012	Newman (pt), Robertson (pt), Collier, Bullen (pt), Peak Hill, Nabberu (pt)	2.5 km/ NS–EW grid	9170	Daishsat Pty Ltd
Eucla SW, Central, East WA	November 2011–April 2012	Balladonia (pt), Culver (pt), Naretha (pt), Loongana, Madura, Burnabbie (pt), Forrest, Eucla (pt), Noonaera (pt)	2.5 km/ NS–EW grid	14 703	Atlas Geophysics

Table 2 continued over page.

Survey	Date	1:250 000 map sheets	Station spacing/ orientation	Stations	Contractor
Kimberley Road Traverses WA	August 2011– September 2011	Montague Sound (pt), Drysdale (pt), Ashton (pt), Cambridge Gulf (pt), Charnley (pt), Mount Elizabeth (pt), Lissadell (pt), Derby (pt), Lennard River (pt), Dixon Range (pt), Noonkanbah (pt), Mount Ramsay (pt), Gordon Downs (pt), Crossland (pt), Billiluna (pt)	400 m station spacing along 2700 km of gazetted roads	6750	Daishsat Pty Ltd

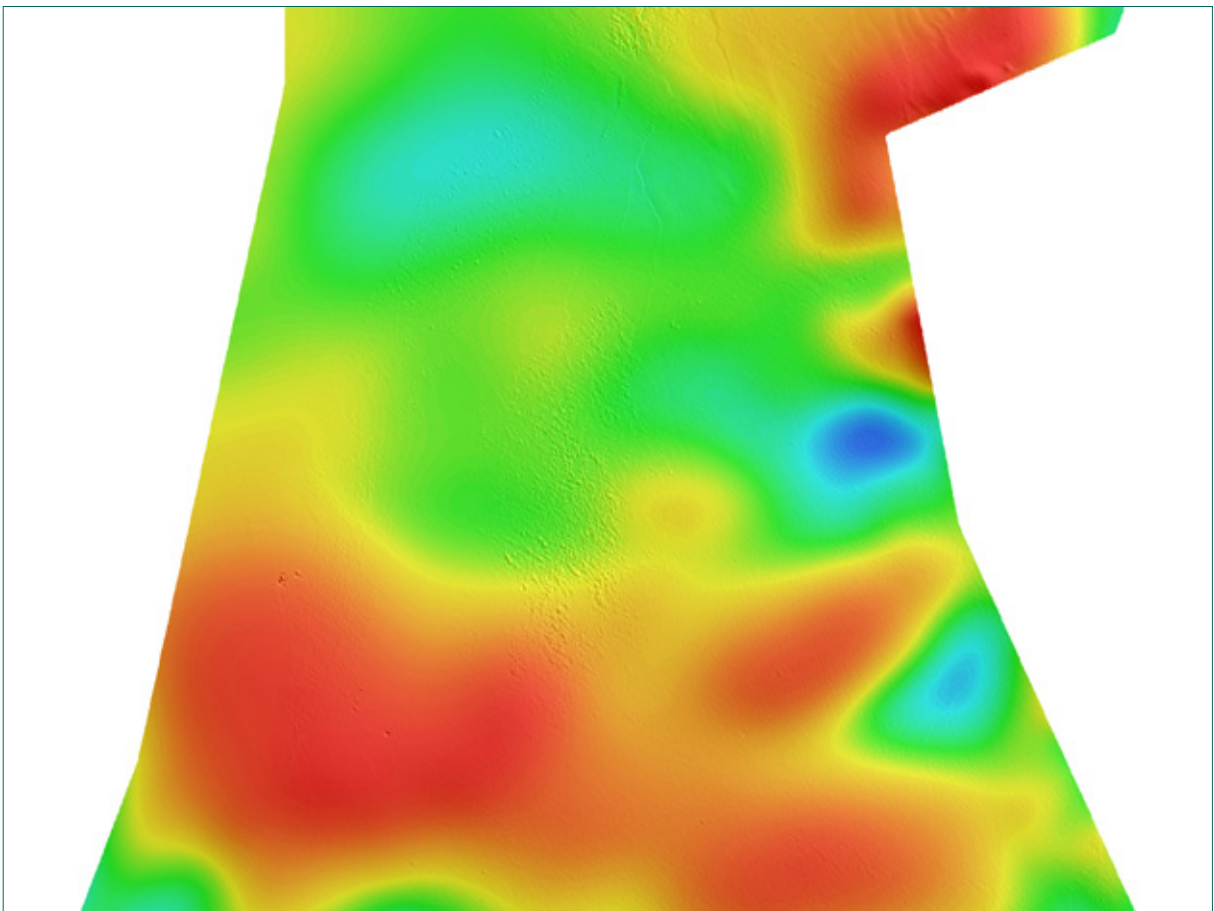


Figure 1. Total magnetic intensity image from the Carnarvon Basin North airborne survey.

For more information

email ausgeomail@ga.gov.au

Related articles/websites

Geophysical Archive Data Delivery System (GADDS)

www.geoscience.gov.au/gadds.



© Commonwealth of Australia 2012.