

AVO data is now available in Area W06-7 of the 2006 Acreage Release

As part of the 2006 Acreage Release Geoscience Australia has reprocessed parts of 2 lines from the Plumhead 2D Seismic Survey (shown on Figure 1) collected over the Browse Basin in 1998 and available through the GA Data Repository.

The Caswell Sub-basin is the northernmost major depocentre of the Browse Basin, containing up to 15 km of Palaeozoic to Cenozoic sediments (Struckmeyer et al, 1998). It is flanked to the east and southeast by the Prudhoe Terrace and Yampi Shelf, which are characterised by shallow, gently basinward-dipping to relatively flat-lying basement. Basement comprises Proterozoic metasediments and rhyolitic–dacitic volcanics (Kimberley Basin), and is typically highly eroded with a rugose palaeo-topographic relief. This basement is overlapped by Permian to Mesozoic and Cainozoic sediments that progressively thin across the terrace and shelf from about 5 km to less than 500 m thick. The outer margin of the Caswell Sub-basin is marked by an arcuate Triassic structural high (Buffon-Scott Reef-Brecknock anticlinal trend). This outer high passes westward into the deep waters of the Scott Plateau, the inboard (eastern) portion of which is underlain by the Seringapatam Sub-basin. A stratigraphic column indicating the sections where the possible AVO features could occur is shown as Figure 2 (after Blevin et al, 1998a; Struckmeyer et al, 1998).

Line P98-35 shows an AVO anomaly which can be seen in Figures 3, 4, 5 and 6 and may be of a similar geological setting to Brecknock South 1. This well, located approximately 30 km north of the AVO anomaly, was drilled in 2000, and intersected a 134 m gross gas column in good quality reservoir sandstones of the Middle Jurassic Plover Formation.

Areas W06-7

Caswall Sub-basin

Bids close 9th November 2006

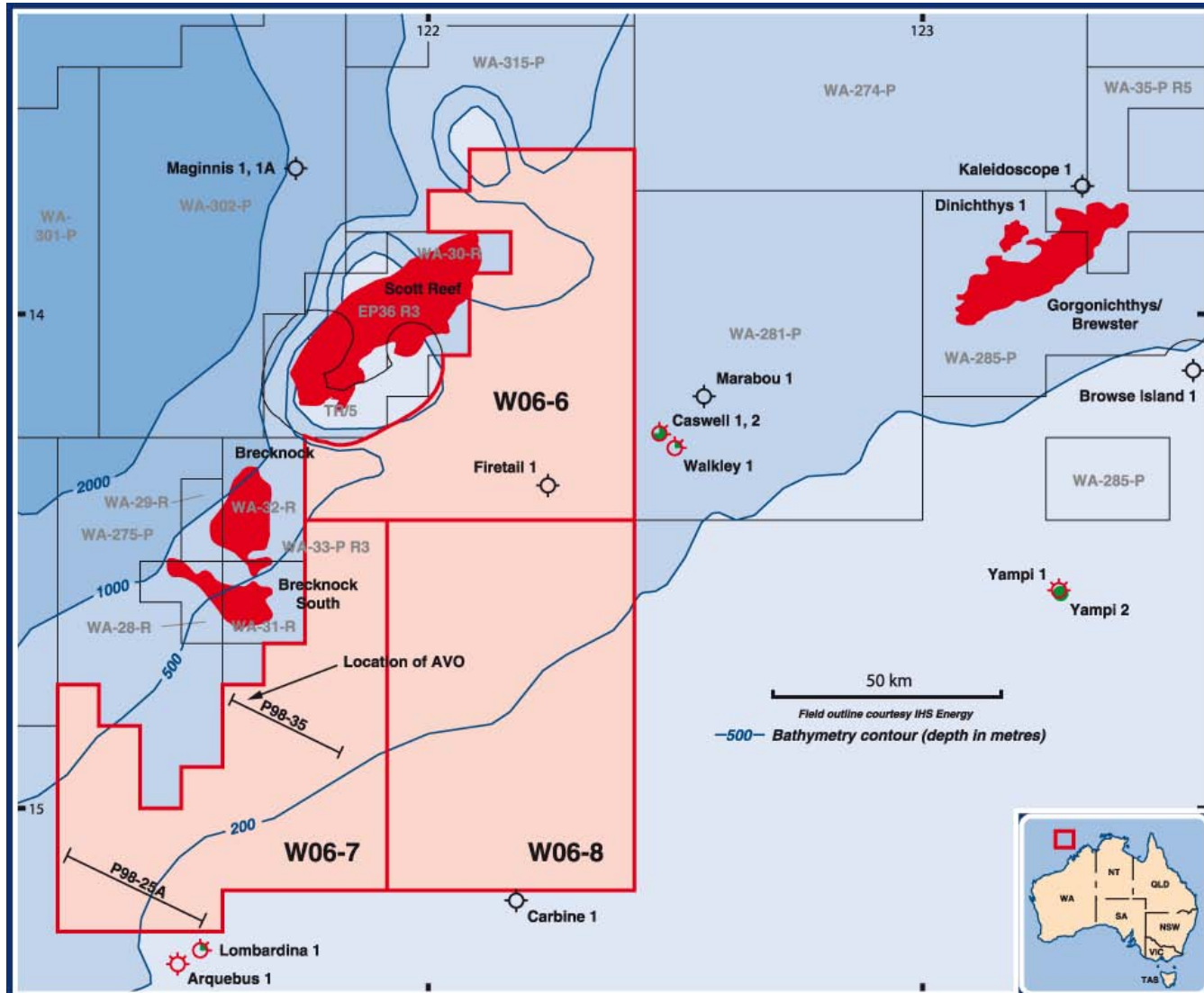
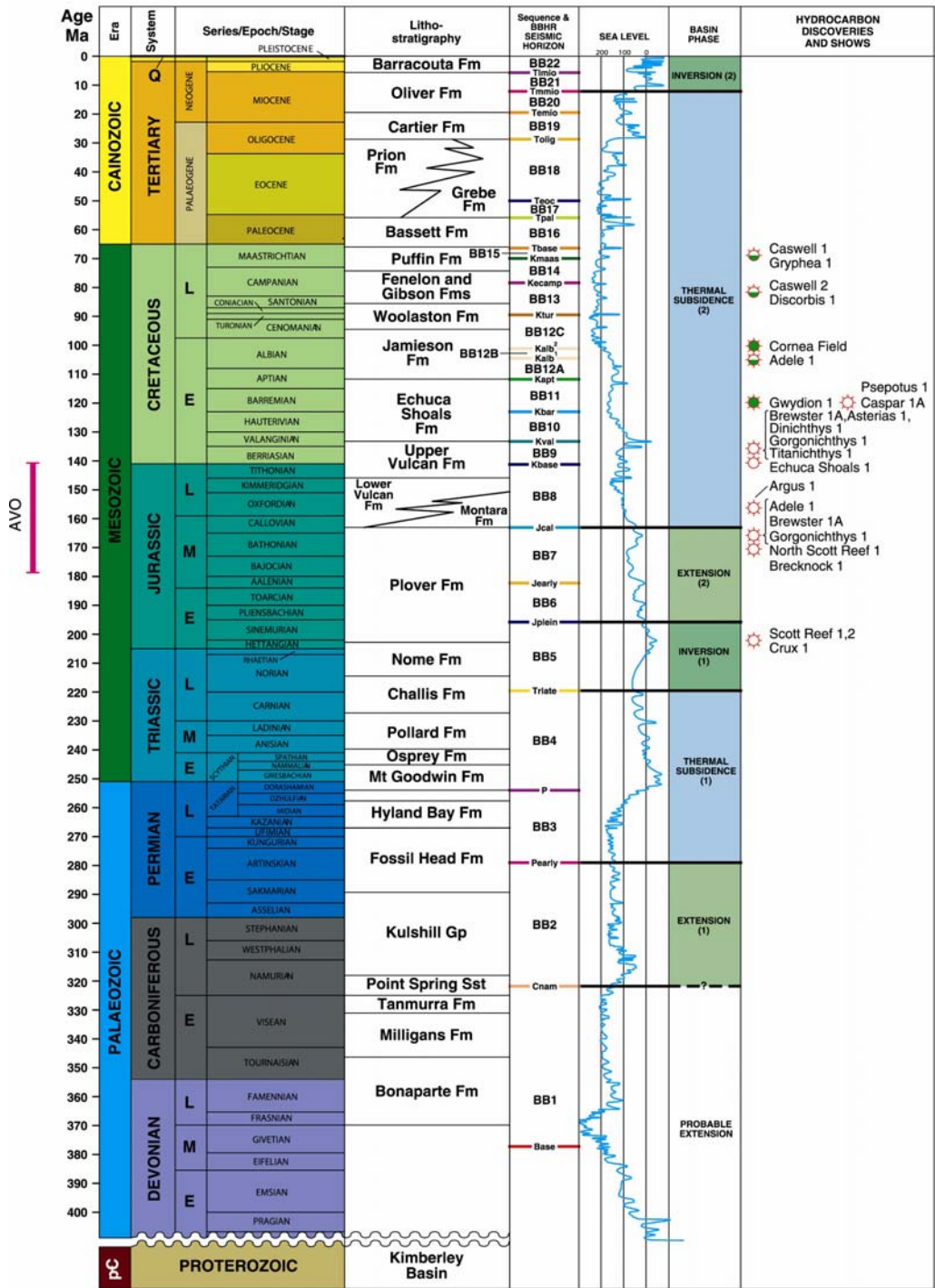
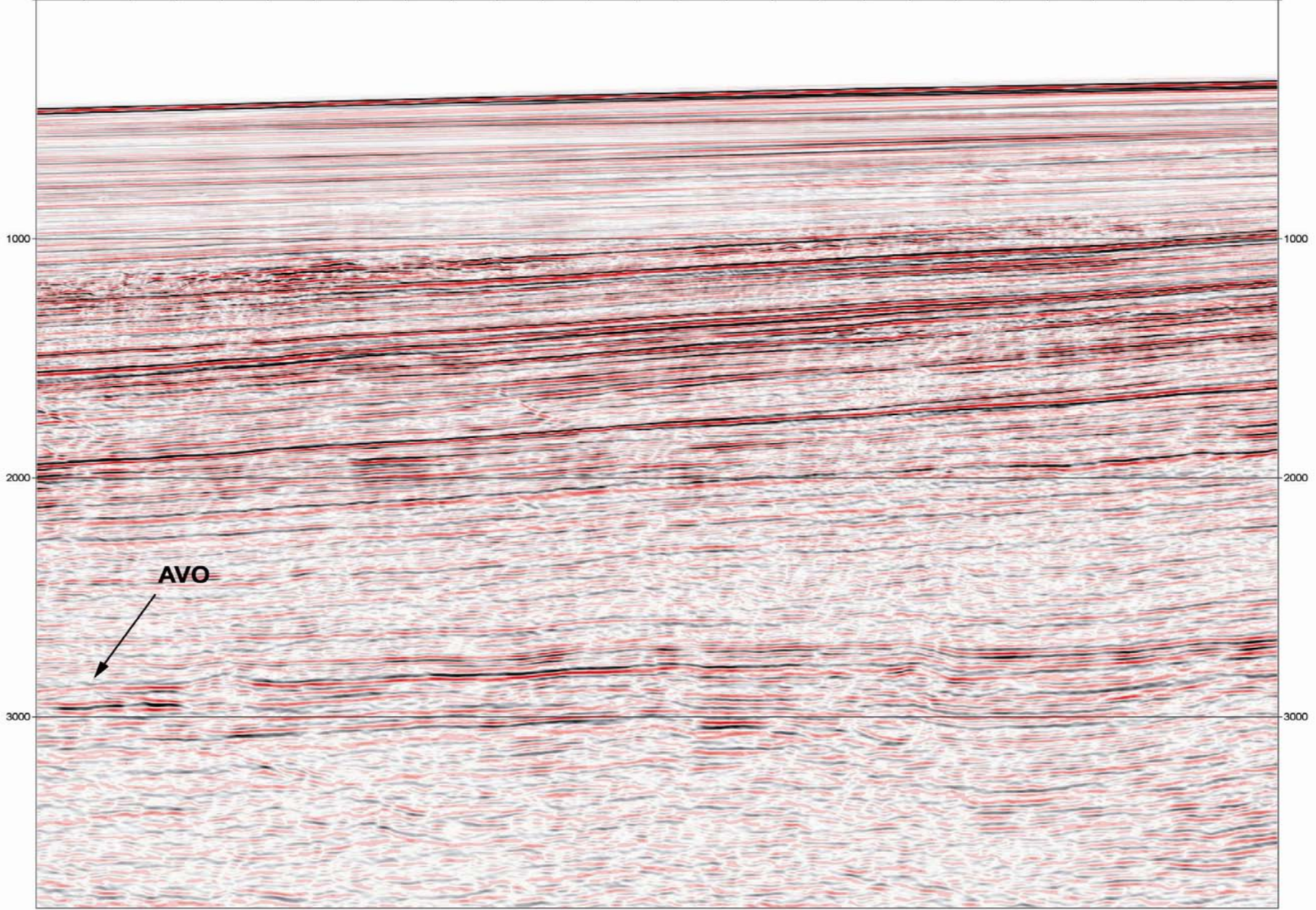


Fig 2



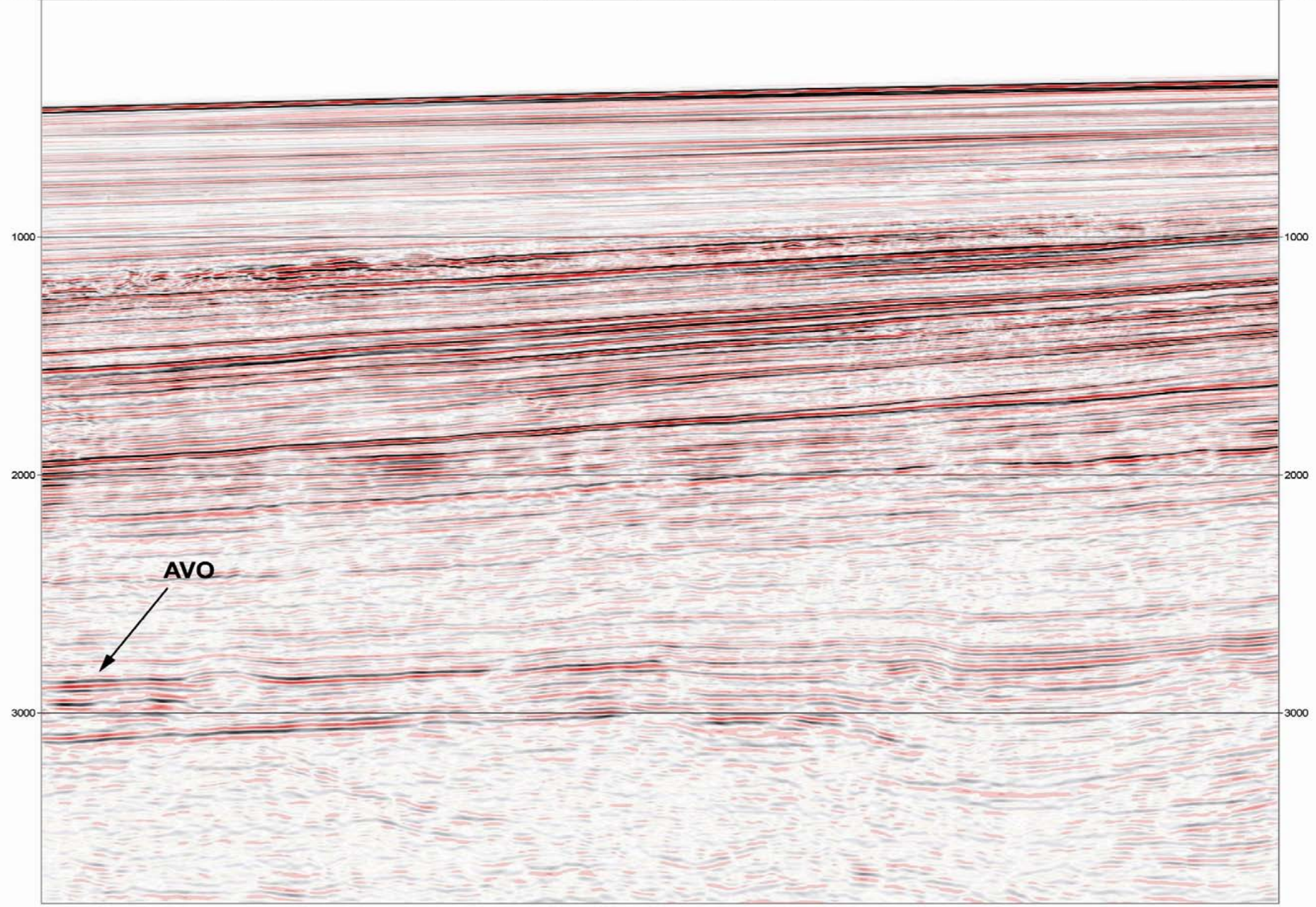
2006 Acreage Release W06-7 Line P98-035 Kirchhoff PreSTM Near Offset Zerophase Stack (0-15 degree angle mute)

CDP	2040	2003	1966	1929	1892	1855	1818	1781	1744	1707	1670	1633	596	1559	1522	1485	1448	1411	1374	1337	1300	1263	1226	1189	1152	1115	CDP
SP No#	1901	1882.5	1864	1845.5	1827	1808.5	1790	1771.5	1753	1734.5	1716	1697.5	679	1660.5	1642	1623.5	1605	1586.5	1568	1549.5	1531	1512.5	1494	1475.5	1457	1438.5	SP No#

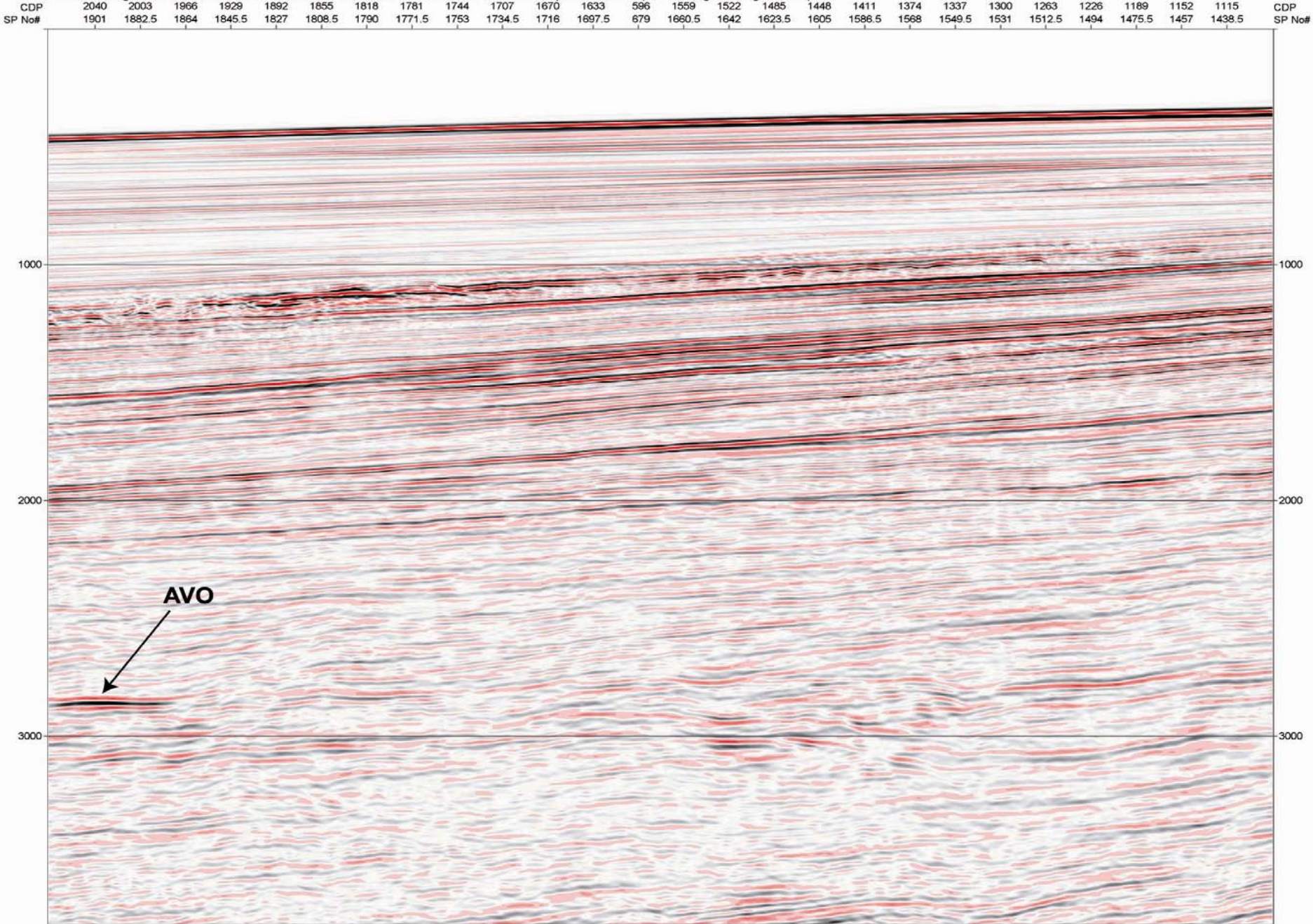


2006 Acreage Release W06-7 Line P98-035 Kirchhoff PreSTM Middle Offset Zerophase Stack (15-30 degree angle mute)

CDP	2040	2003	1966	1929	1892	1855	1818	1781	1744	1707	1670	1633	596	1559	1522	1485	1448	1411	1374	1337	1300	1263	1226	1189	1152	1115	CDP
SP No#	1901	1882.5	1864	1845.5	1827	1808.5	1790	1771.5	1753	1734.5	1716	1697.5	679	1660.5	1642	1623.5	1605	1586.5	1568	1549.5	1531	1512.5	1494	1475.5	1457	1438.5	SP No#



2006 Acreage Release W06-7 Line P98-035 Kirchhoff PreSTM Far Offset Zerophase Stack (30-45 degree angle mute)



Data is now available through the Geoscience Australia Data Repository

- near, middle and far angle stacks
- CMP gathers with 4th Order NMO and Eta corrections
- Velocities and Navigation files

Geoscience Australia Data Repository

Phone +61 2 6249 9222

E-mail ausgeodata@ga.gov.au